



Block B, Club House & Block A

*BLOCK - A*



*BLOCK - C*



Block A –seventh Floor Roof Slab Completed. Eighth Floor Roof Slab Works In Progress. Block B – Second Floor Roof Slab Concrete Works Completed. Third Floor – Columns & Roof Slab Shuttering Works In Progress. Block C –sub Structure: Raft And Columns Concrete Works Has Been Completed And Plinth Beam Works In Progress .stp Retaining Wall Wip

Block D / Club House – Raft, B2 Level - Retaining Wall And Columns Concrete Completed, Roof Slab Shuttering Wip

North Side



South Side



Block A : B2 Roof Slab On 10.10.25 , B1 Roof Slab On 15.11.25 And Stilt Roof Slab Completed On 14.12.25 1st Floor Roof Completed On 04.01.26 , 2nd Floor Roof Slab Completed On 25.01.26 , 3rd Floor Roof Slab Completed On 18.2.26, 4th Floor Roof Slab Completed On 17.3.26 & 5th Floor Roof Slab Completed On 4.4.26. Sixth Floor Roof Slab Completed On 02.05.26 seventh Floor Roof Slab Completed On 27.5.26. eighth Floor Roof Slab – South Side / Pour 1 ( Units 1- 5 ) Shuttering Completed And Reinforcement Wip. Pour 2 ( Unit-6,7,8,14,15&16 ) – Slab Shuttering & Pour 3 ( unit - 9,10,11,12 & 13 ) – Columns Works In Progress

*TOWARDS SOUTH -EAST SIDE*



*TOWARDS NORTH -EAST SIDE*



Block A – Elevation



Block A – Elevation



Block A – Elevation



Block B : Stilt Floor Roof / First Floor Slab Concrete Works Has Been Completed On 01.04.26 And 1st Floor Roof Level – / Second Floor Slab Concrete Works Has Been Completed On 10.05.26. 2nd Floor Roof Level / Third Floor Slab Concrete Completed On 30.5.26  
third Floor Roof Slab - Pour ( Unit 1-5 ) Slab Shuttering Works In Progress And Other Pours Columns Wip



*EAST SIDE*



*NORTH EAST SIDE*

Block B – Elevation



*NORTH WEST SIDE*



*SOUTH WEST SIDE*

Block B – Elevation



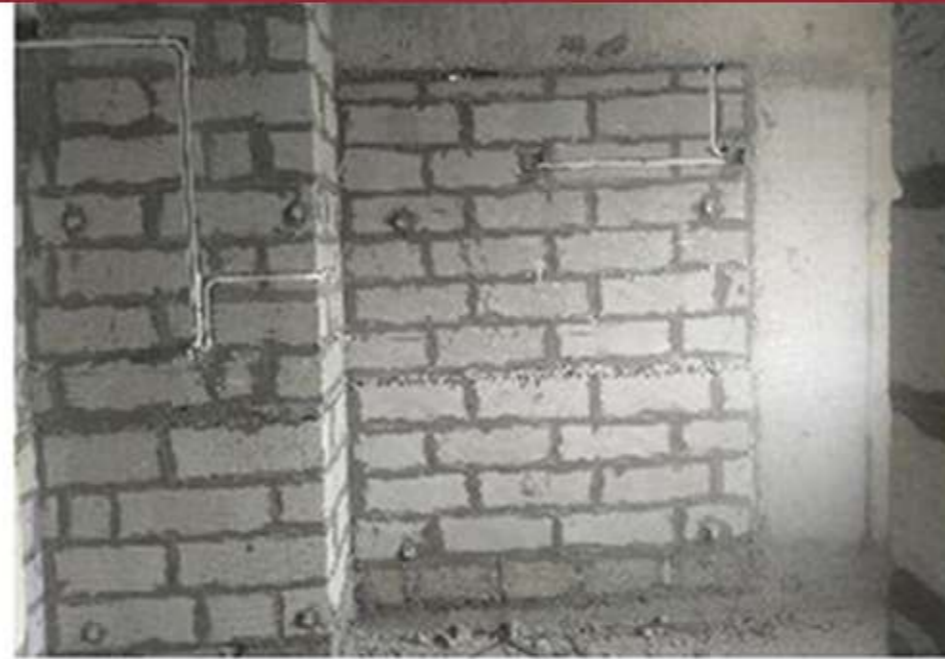
Block D / Club House –raft-rcc Works Has Been Completed b2 Level - Columns & Retaining Wall Concrete Works Are Completed. raft Above Soil Filling & Pcc Completed. B2 Roof Level Slab Shuttering Works In Progress



Block C : Raft Concrete Completed On 27.2.26 , B1 Level Column Works Are Completed & B2 Columns Works Completd On 18.4.26 plinth Beam Pcc & Reinforcement Works Are In Progress stp – Raft Completed On 18.3.26. Stp –outer Retaining Wall Works Completed. Inner Works And Outer Soil Filling Wip



External Development : Compound Wall Works Block A / Se Side Foundation Preparatory Works : Soil Filling, Consolidation, Sheets Removing In Progress And Pcc Completed



Block A – Aac Block Works ( 1- 6th Floor ) & Lintel Concrete Works lintel Concrete Works ( 1 St Floor ) Completed And Electrical Wall Chasing & Conduit Instalation Wip